

# **Wheelchair Glider Description and Assembly Instructions 2019**

Manufactured in the USA by  
Ironwood Products LLC

Contact: Chad Dietz

800-545-2191

[info@IronwoodProducts.com](mailto:info@IronwoodProducts.com)

831-277-2014 text to cell



Plan your layout carefully!  
Watching these videos will help you  
visualize your goal for the day:

It is HIGHLY recommended you watch these videos by following these links:

(May show a different model, but very helpful!)

<https://youtu.be/Wu18pUDZnnU>

[https://youtu.be/9B\\_1VxEC5SU](https://youtu.be/9B_1VxEC5SU)

<https://youtu.be/nQrLpnhNyl8>

Also be careful of sharp edges and staples etc.  
while putting the swing together.

# Tools needed:

Tape measure

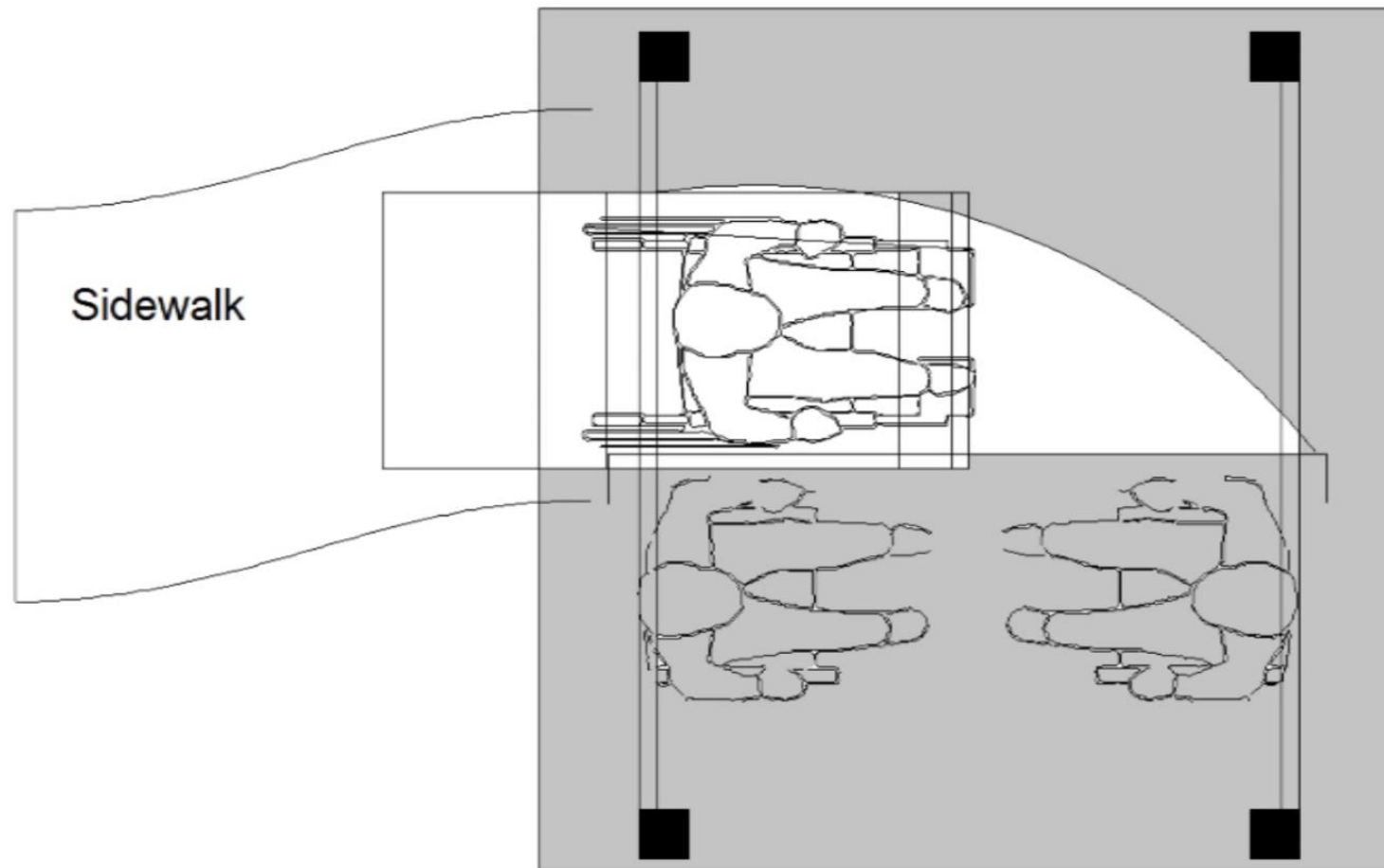
Roto hammer for anchors

Impact driver for screws and drill

Large square

Set of wrenches

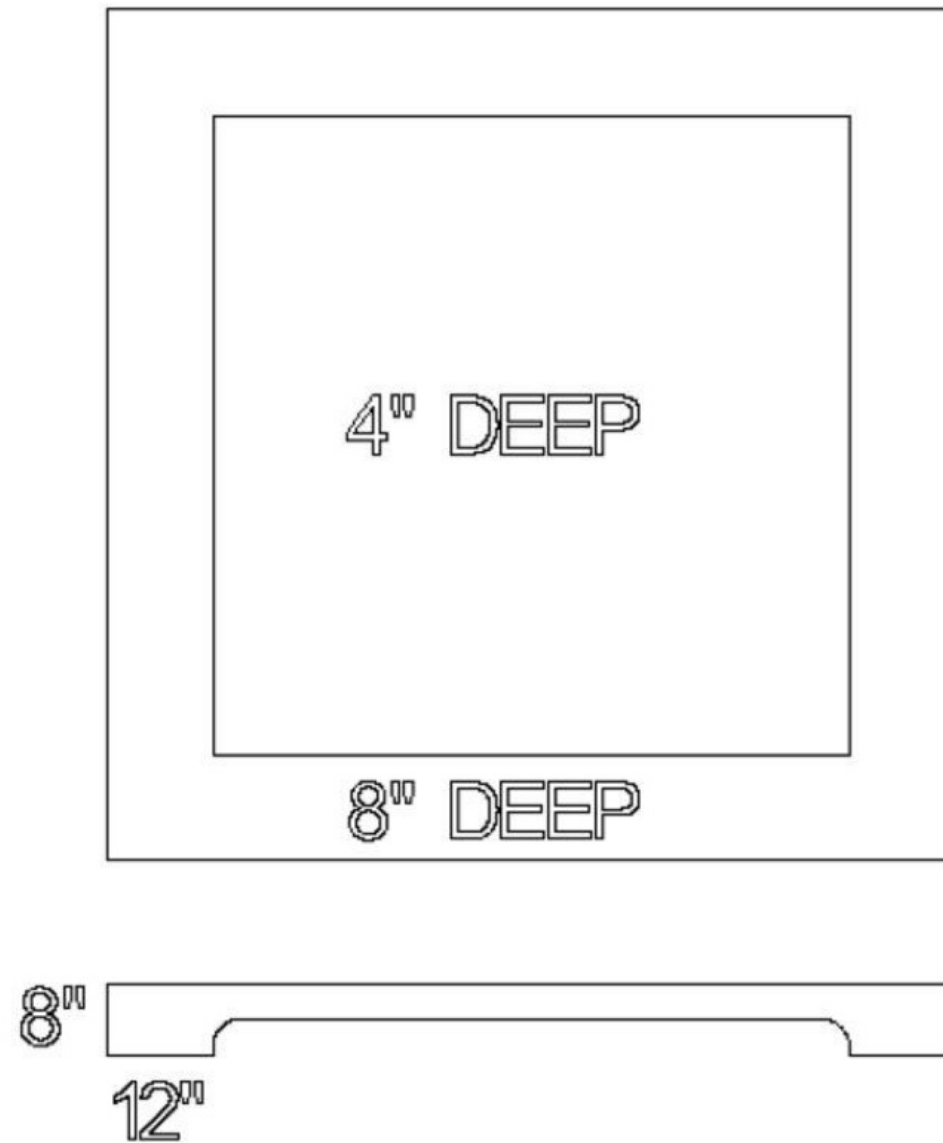
Level



Consider where the wheelchair will approach!

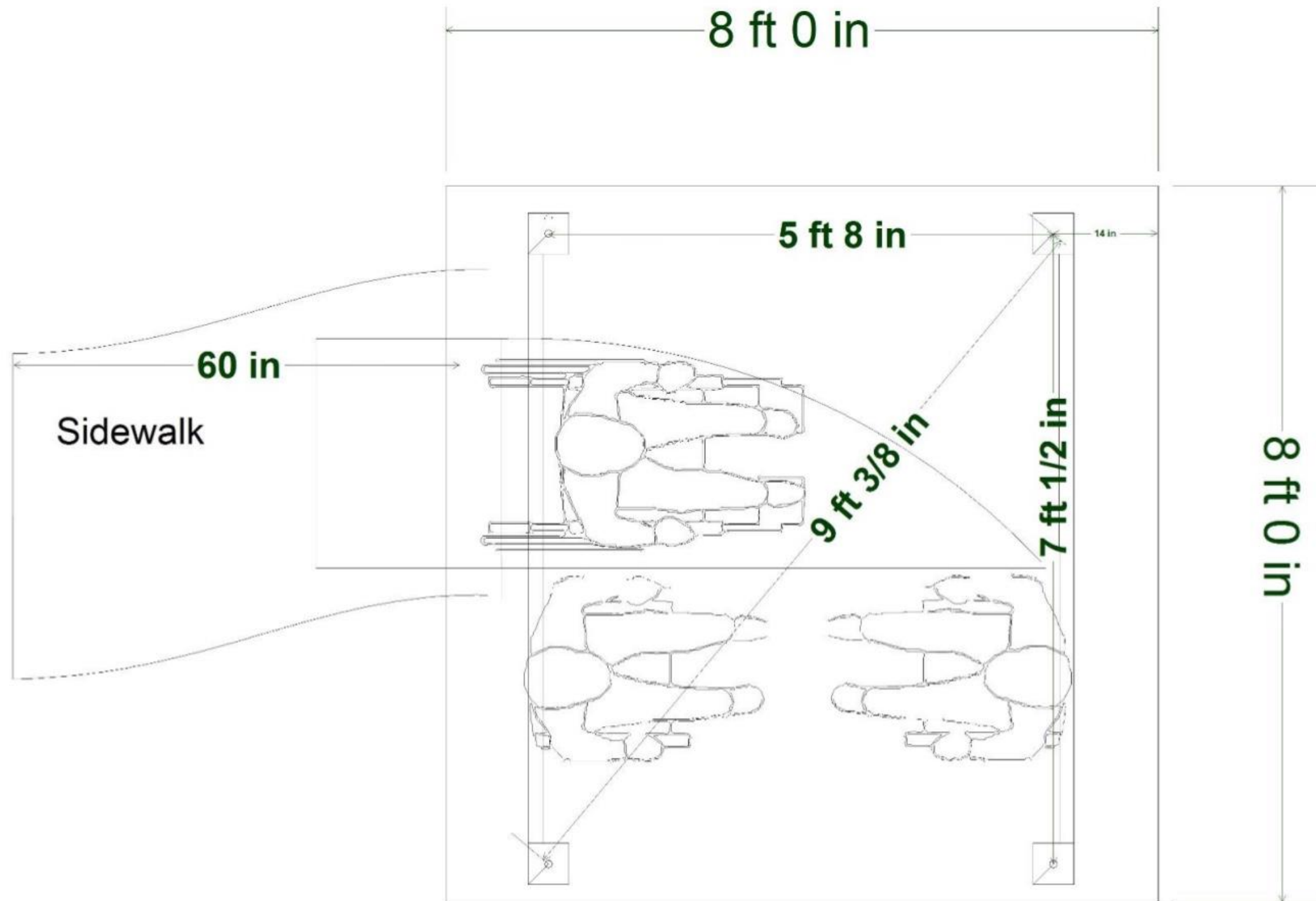


# Suggested Slab Layout and Assembly Notes

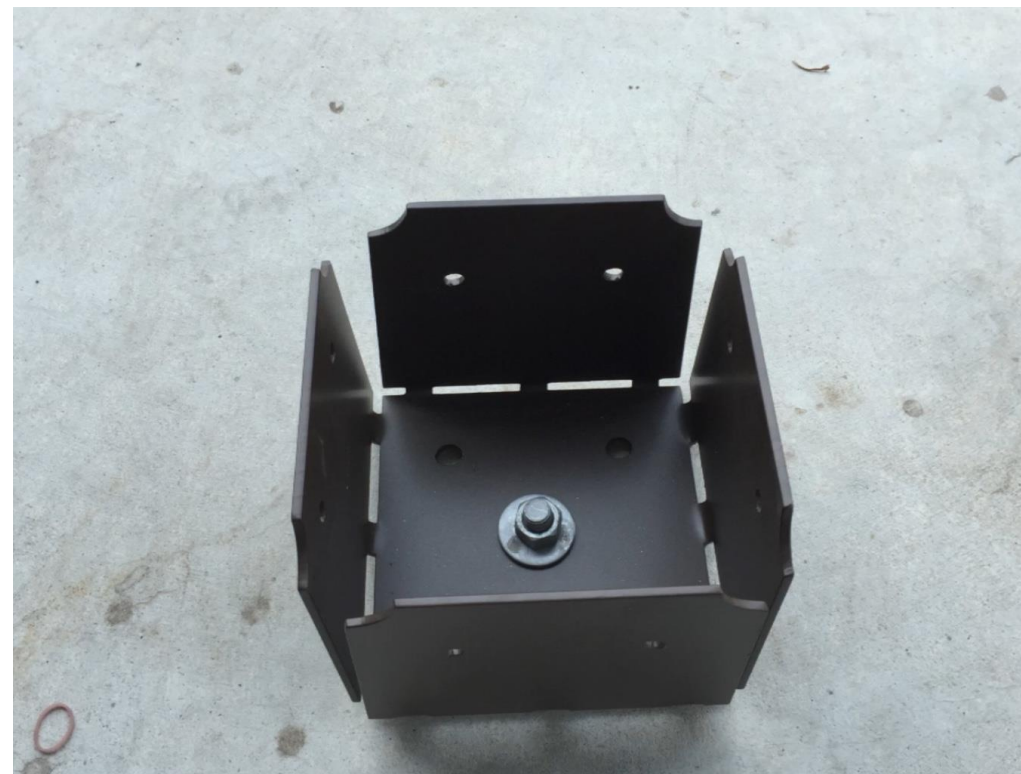


Your concrete person should know his options:  
Within the pour they may be using:  
Fiber cement Or Rebar (#3 on a 16" grid) Concrete mesh

**An 8' x 8' floating slab works great!**



Set the anchor bolts first.  
According to these measurements.

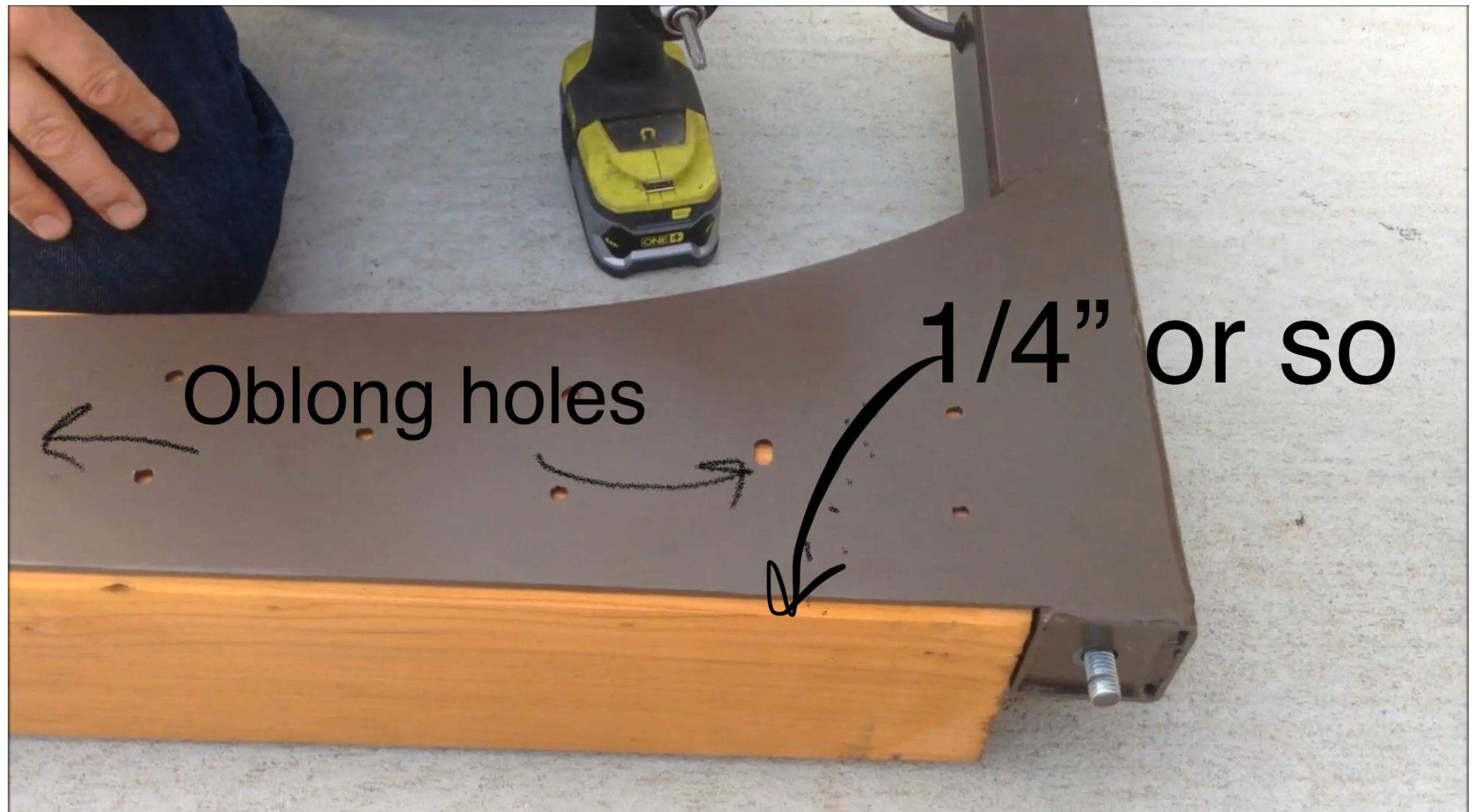


Galvanized plate goes UNDER the boot  
That keeps things from moisture buildup





Layout two posts and attach the 'short' crossbar,  
The sides of the crossbar flanges should sit about  
1/4" from the outside edge of the wood.



Screw only the oblong holes,  
that way you can adjust for level  
...after you stand everything up.





You can stabilize the piece using plywood,  
while you are putting the next piece up.  
I use the lid from the crate  
and a couple of the sheetrock screws.

Place the 4 HeadLock screws into each post base.



**Canopy model continue below:**



**OR**

**Pergola models please watch video:**



Mount the long crossbars, keeping in mind that the side with 3 swingarm locations is the side the wheelchair ramp will be. Make sure everything is straight before you commit to putting in all the headlocks in.

**<https://www.youtube.com/watch?v=Wu18pUDZnnU&feature=youtu.be>**

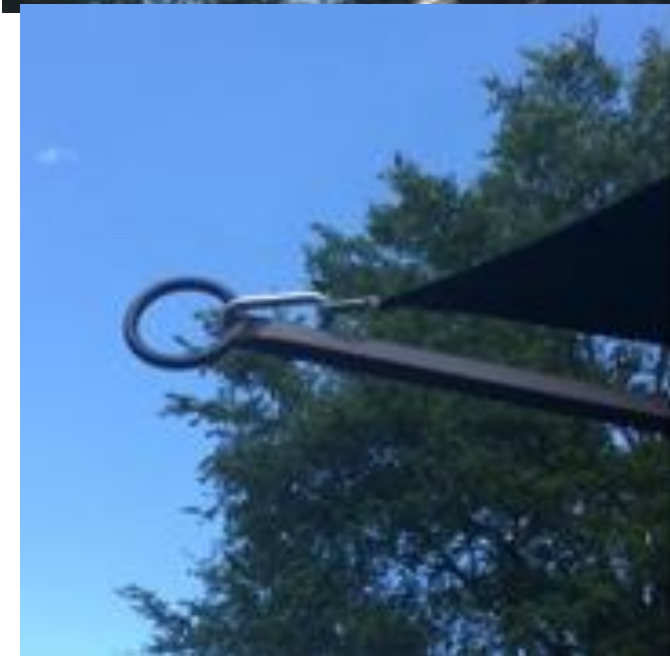




Check posts for level, then mount the canopy arms, using two of the headlock holes, and one hole that uses a small 1/4" nut and bolt.

Now you can put in the rest of the headlocks. Be CAREFUL not to over<sub>13</sub>tighten (redwood is soft).





Hook the canopy up,  
keep the turnbuckles extended  
and don't tighten them  
until you place the PVC pipe on the studs.





Put PVC tubes in center cross fitting, stretch the canopy upwards, and have another person insert outside ends over the studs that are welded onto canopy arms.

The canvas stretches pretty tight.  
You will need muscles and a ladder!





Mount the chairs using the large carriage bolts



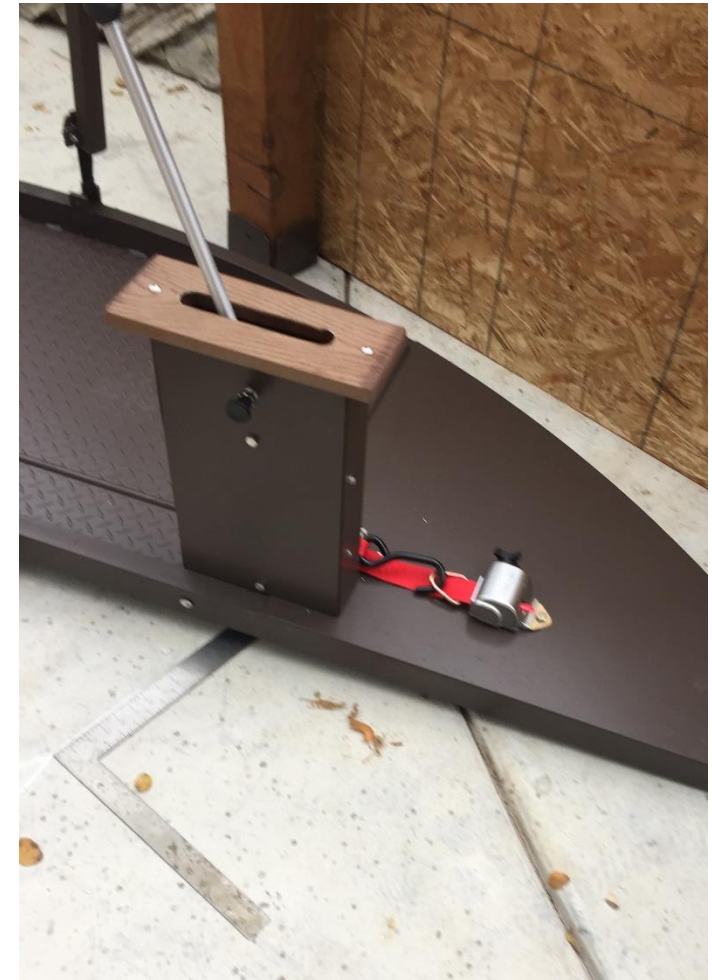


Hang the platform,  
the straps are pressure fit with the  
aluminum pins.



The platform should be about 3" off the ground.





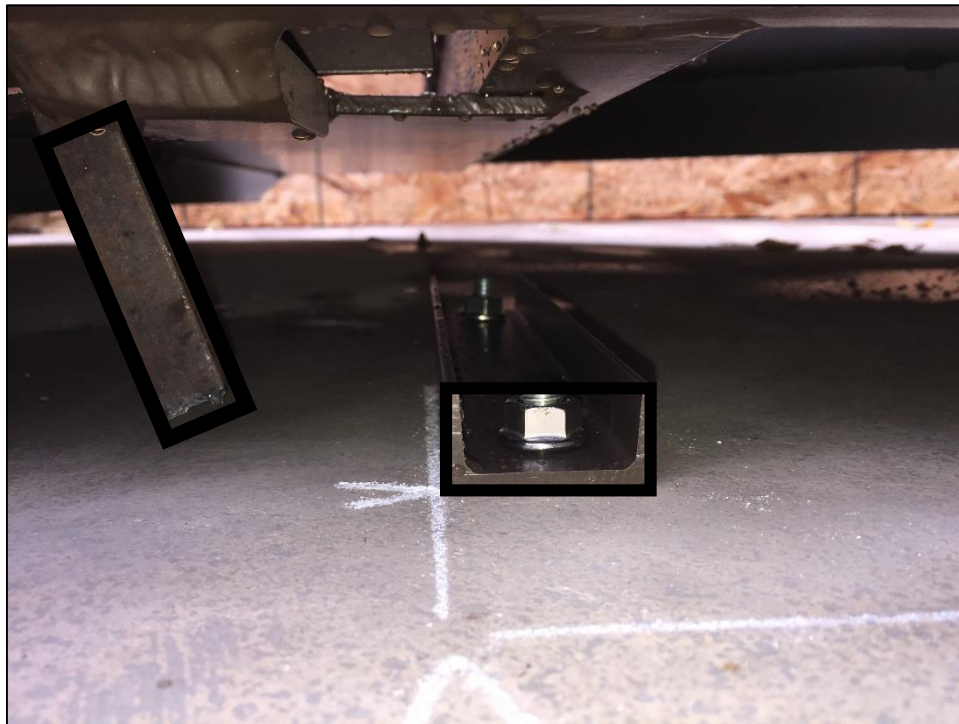
While the platform is hanging freely,  
mark the center point, at the edge of the platform.  
Then disconnect the front strap and move the platform  
out of the way





After you move the platform out of the way  
Mount the brake stop 2" in from edge of where  
platform will be as shown in picture with the 3/8  
anchor pins.





Move the platform back into place.  
Here is a view under the platform showing the  
brake a few inches away from the brake stop.  
This is how it should look when the platform is  
hanging freely.

Please review the operation instructions and the safety features. The device is very easy to use.

## REMEMBER:

The SURE LOK safety strap **MUST** be secured before the swing can be used.

The plunger pin **MUST** be pulled in order to raise OR lower the ramp.

The motion of the swing is **LIMITED**,  
For a gentle experience.  
(only 14" in either direction)





Make sure everything is fastened properly  
before you try the swing!  
Share instructions to **EVERYONE** on how to use the  
swing by texting the word **SWING**  
to **805-219-6912**